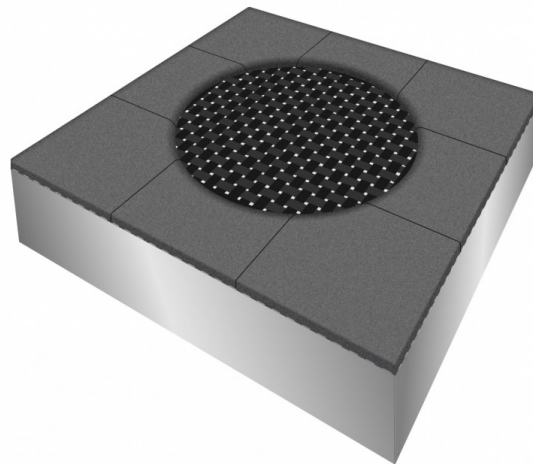
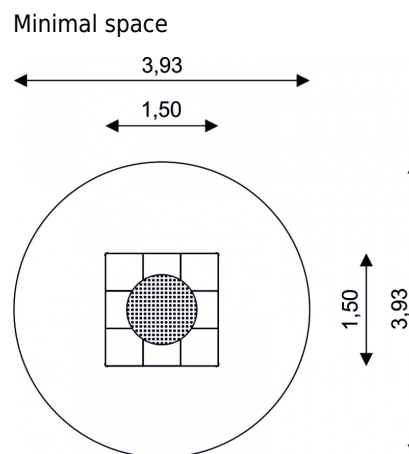


SPORT TRAMP 2202

Kids Tramp Playground Round



Device Specifications	
Length	1,50 m
Width	1,50 m
Jumping bed	1,07x1,07 m
Usable jumping area	ø0,92 m



Material Specification

- 150x150x30cm frame made of special steel for ground level installation, hot dip galvanized
- the reinforced mesh of belt material features a high level of vandalism safety
- resistant to atmospheric conditions (all-season use)
- 73cm depth under the jumping bed

Additional comments

- The equipment is designed for public playgrounds
- Designed for unattended public playground areas
- Suitable for public playgrounds according to DIN EN 1176

The equipment render is of an illustrative nature and shows only the general specification of the equipment, but not its actual appearance. The colours may differ from those demonstrated on render.