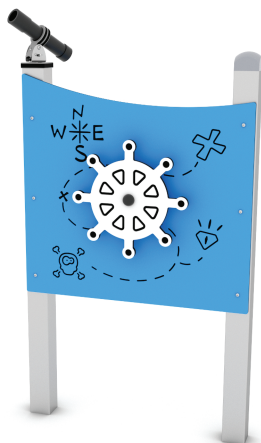
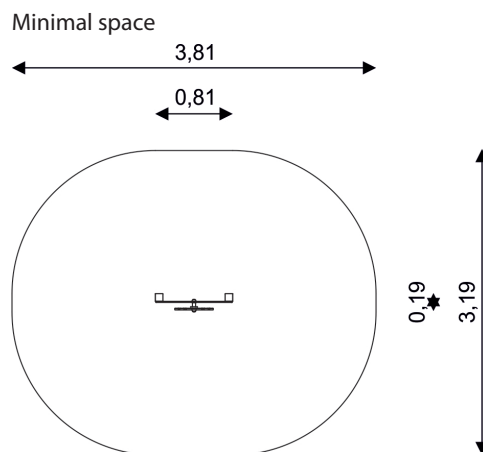


UNI PLAY SOLO 1763

SOLO PANEL



Device Specifications	
Safety zone	10,60 m ²
Length	0,84 m
Width	0,25 m
Total height	1,34 m
Free fall height	<0,60 m
Age group	1-8 years
In accordance w PN-EN standards	1176-1:2017
Availability of spare parts	Yes



MATERIAL SPECIFICATION

- Stainless steel or Galvanized and/or powder coated steel 80x80 mm construction;
- Top of the construction is secured with rubber caps;
- Roofs and panels are made of atmospheric condition resistant HDPE plates;
- Screws covered with plastic caps or made of stainless steel;

ADDITIONAL COMMENTS

- Depth of foundations on a flat surface 80/70/60 cm;
- No sharp edges or chinks that would pose a danger of jimmieing the head, fingers or any other body parts;
- The equipment is designed for public playgrounds;
- The equipment render is of an illustrative nature and shows only the general specification of the equipment, but not actual appearance;
- The equipment is suitable for people with disabilities;

SURFACES

Due to the free fall height of the equipment, the PN-EN 1176-1:2017 standard allows the following surfaces: turf/ soil (A,B,C), sand with minimal layer thickness of 30 cm (A,C), synthetic material approved for free fall of 0,60 m (A,B,C).

UNI PLAY

Address: Building E, Wisniowy Business Park, Ul Ilzecka 26, 02-135, Warsaw, Poland
 Tell: +48 221 530 191
 Email: info@uniplay.com.pl