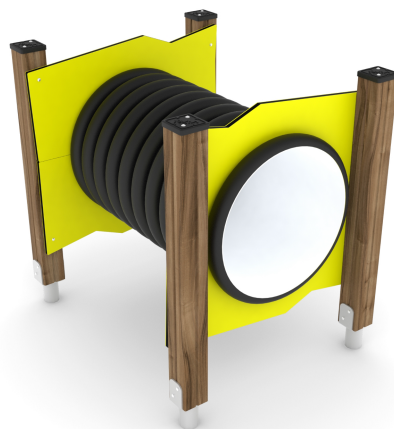


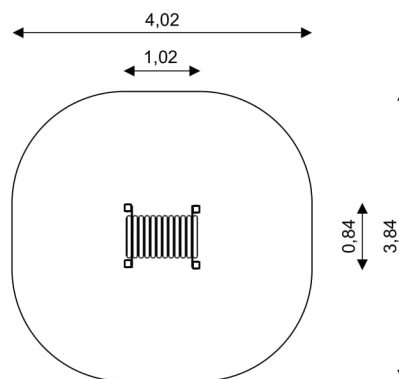
UNI PLAY CLIMBOO WP 1459

TUBE PASSAGE



Device Specifications	
Safety zone	13,50 m ²
Length	1,02 m
Width	0,84 m
Total height	1,04 m
Free fall height	< 0,60 m
Age range	1-12 years
In accordance w/ EN standards	1176-1:2017
Weight of the heaviest part [kg]	13
Dimension of the biggest part [cm]	56x96
Availability of spare parts	Yes

Minimal space



Material Specification

- 90x90 mm main construction made of impregnated, laminated wood of pine;
- Top of the construction is secured with polyethylene caps to protect the wood surface from atmospheric conditions;
- Metal anchors are made of hot dip galvanized steel, protecting the wood from direct contact with the ground to prevent rot and extending the product's life;
- Panels are made of atmospheric condition resistant HDPE plates;
- Stainless steel screws or screws covered with plastic caps;
- No sharp edges or chinks that would pose a danger of jamming the head, fingers or any other body parts;
- Double wall tube passage made of polypropylene;

Additional comments

- The equipment is certified by an accrediting organization or by certificate of conformity;
 - Depth of foundations on a flat surface: 80/70/60 cm;
 - The equipment is designed for public playgrounds;
- The equipment render is of an illustrative nature and shows only the general specification of the equipment, but not its actual appearance. The colours may differ from those demonstrated on render.

Surfaces

Due to the free fall height of the equipment, the EN 1176-1:2017 standard allows the following surfaces: turf/soil (A,B,C), sand with minimal layer thickness of 30 cm (A,C), synthetic material approved for free fall of 0,60 m (A,B,C)

UNI PLAY

Address: Building E, Wisniowy Business Park, Ul Ilzecka 26, 02-135, Warsaw, Poland
 Tell: +48 221 530 191
 Email: info@uniplay.com.pl